



Government of Pakistan  
**National Disaster Management Authority**  
(Prime Minister's Office)  
ISLAMABAD



**AWARAN EARTHQUAKE BALOCHISTAN**

**SITREP 11 - Dated 6th October 2013**

Sequel to the earthquake of 24 September 2013, following actions have been taken so far at Provincial and Federal level:-

**Affected Areas:** Affected areas are as follows, Union Councils – Awaran, Tirtej, Gashkore, Gajjar, Nok Jo, Parwar and Dandar. Map of affected area is attached as Annex A.

**Casualty state**

Serial	Areas	Deaths	Injured
1.	Awaran	330	584
2.	Kech	46	240
	<b>Total</b>	<b>376</b>	<b>824</b>

These are preliminary figures which are subject to change after assessment.

Rapid Assessment is well under way in the affected areas through Army and Civil Administration.

**Relief Provisioning**

- Details of relief provided is attached as “Annex B”.

**Air Effort**

- NDMA coordinated provision of aircrafts from armed forces for life saving responses, medical evacuations and transportation of relief goods from logistic hubs to affected areas. So far following air efforts have been committed in support of relief effort:-

- C-130 / IL-76 - 34 sorties
- Helicopters - 112 sorties
- Fokker - 5 sorties

- Air assets committed:
  - Pak Army - 14 helicopters
  - PAF - 2 C130s, 1 IL 76 aircrafts
  - Pak Navy - 1 Fokker and 1 helicopter
  - Punjab Government - 1 helicopter

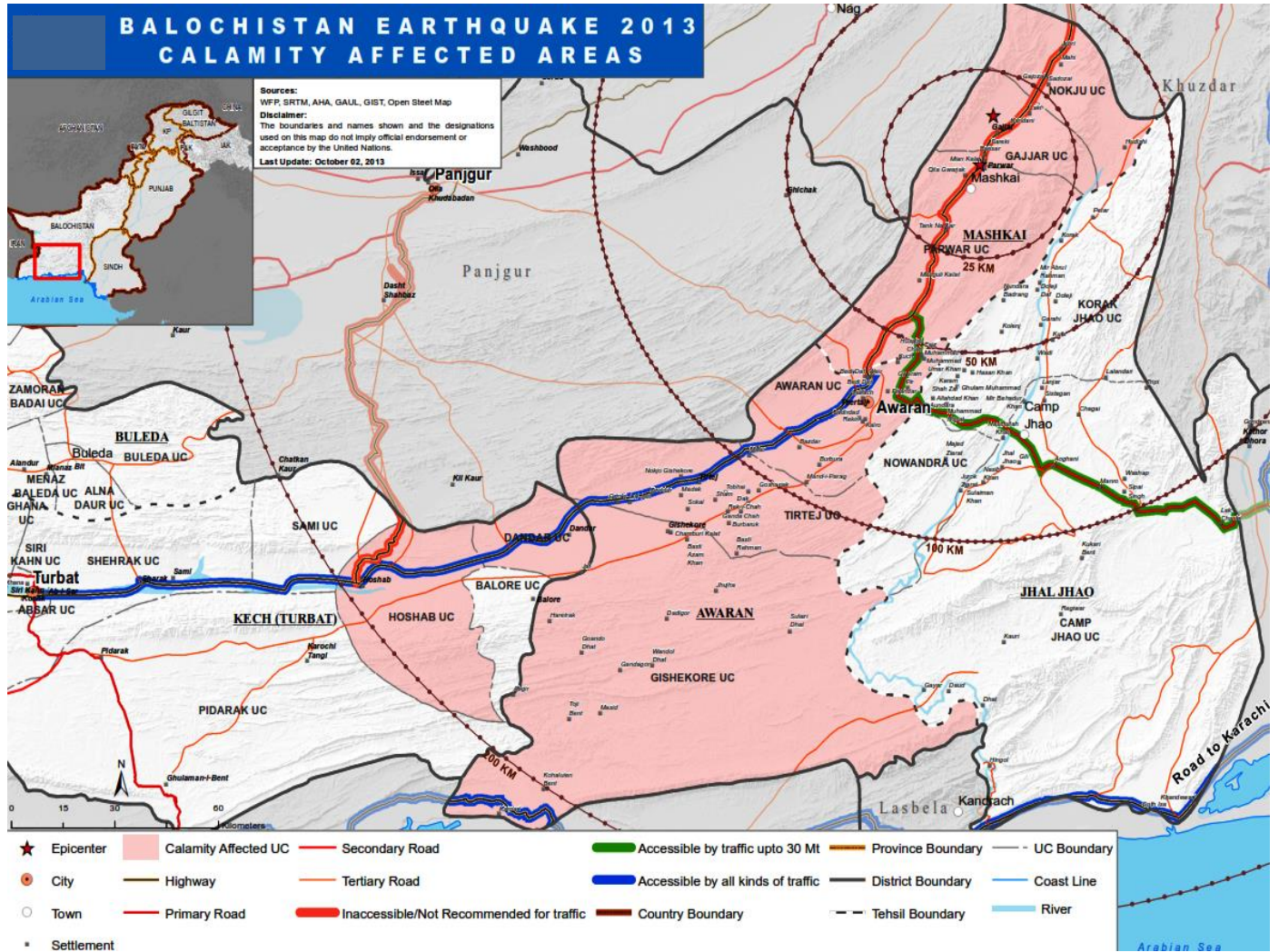
**Medical Support.**

Details of medical support/ medical evacuations and treatments are attached as “Annex C”.

**Collection Points.**

Details of collection points are attached as “Annex D”.

**Map of Earthquake Affected Area**



**RELIEF AWARAN- EARTHQUAKE 2013**

**UPDATE - 06 OCTOBER 2013**

Items	PDMA Balochistan			NDMA			Army	Navy	Civil Society Orgs	PDMA KP	PDMA Sindh	Foreign Asst	PDMA Punjab			Total		
	Planned	Reached	En-route	Planned	Reached	En-route							Reached	Reached	En-route (Khi to Awaran)	Planned	Reached	En-route
Ration / Food Packs	41435	22381	19,054	20,000	12158	3160 (4682 bal)	1,781	520	5840 Food Packs, 50t High Energy Biscuits + 15 ton milk	-	290	460	30,668	8,514	22,154 (incl 20 Trucks 20,000 food hampers)	100,994	51,484 + 50tons High Energy Biscuits	49,510 + 15 ton milk
Tents	16,906	14606	2300	11,600	11,600	-	466	200	3,400	1,000	1,200	-	10,218	10,218	-	44,990	42,690	2300
Blankets	1,625	1625	-	10,000	9750	250	500	250	5,000	1,000	-	9,250	360	360	-	27,985	18,485	9,500
Plastic Mats	12,210	12,210	-	5,000	-	5,000	-	-	-	200	-	-	-	-	-	17,410	17,410	-
Mosquito Nets	6,200	6,200	-	5,000	5,000	-	-	-	7,000	-	-	-	5,000	-	5,000	23,200	23200	-
Mineral Water Bottles	-	3900	-	-			14890	3000	19,900 + 50 ton	-	-	-	-	-	-	-	41,690	50 ton
Misc Items i.e. Jerry Cans, Water Tanks, Water Filtration Plants, Generators	400	400	-	6	6	-	-	-	1553	-	-	49	-	-	-	2008	2008	-

## Donations by CSOs

	Tents	Ration Packs	Mineral Water Bottles	Water Tanks	Water Filters	Pot Sheets	High Energy Biscuits (Cartons)	Plastic Sheets	Mosquito Nets	Blankets	Biscuits Cartons	Mineral Water Cartons	Quilts	T-Iron	Water Plastic Sheet Cover (Carton)	CGI Sheets	Jerry Cans	Water Cooler	Milk
<b>G.Total</b>	<b>3,400</b>	<b>5840</b>	<b>15,530 + 50 tons</b>	<b>553</b>	<b>20</b>	<b>85</b>	<b>50 tons</b>	<b>40</b>	<b>2,012</b>	<b>5,000</b>	<b>65</b>	<b>30</b>	<b>150</b>	<b>50</b>	<b>10</b>	<b>50</b>	<b>1,000</b>	<b>450</b>	<b>15 tons</b>

**MEDICAL STATE**

	<b>Doctors</b>	<b>Paramedics</b>	<b>Medicines</b>	<b>Ambulances</b>
<b>Awaran</b>	28	53	- Essential life Saving Drugs and Drugs from MSD (worth Rs 4,500,000/-) - 1 Trauma Kit - Emergency Health Kits - 8 tons of medicines	34
<b>Mashkai</b>	18	10	- Essential life saving drugs - Emergency Health Kits	3 ambulances
<b>Dandar</b>	6	8	Essential life saving drugs	4 ambulances

**Note:-** 12.079 tons medicines have been provided by China also.

**MEDICAL EVACUATIONS / TREATMENTS****Patients Treated**

- Awaran - 10,892
- Labach - 176
- Malar - 743
- Mangoli - 70
- Mashkai - 302
- Pirander - 85
- Tirtej - 37

**Evacuations**

- 20 evacuated by helicopters, 90 evacuated by road.

**Donation Points and General Information**  
**Awaran Earthquake 2013**

**Pakistan Army**

- Karachi -**
- i) Central Ordnance Depot (COD), Rashid Minhas Road.
  - ii) Defence Authority Club, Central Avenue, Phase 2, DHA.
  - iii) Defence Authority Sunset Club, Khe-e-Jami, Phase 2, DHA.
  - iv) Defence Authority Creek Club Zulfiqar, Street 1, Phase 8, DHA.
  - v) Defence Authority Beach View Club, Beach, Phase 6, DHA.
- Lahore -**
- i) Fortress Stadium, Lahore Cantt.
  - ii) Ayub Stadium, Airport Road, Lahore Cantt.
  - iii) DHA – Camp 1: Open Ground, Near Commercial Area, Phase 3.
  - iv) DHA – Camp 2: Jamia Mosque, Phase 1.
  - v) DHA – Camp 3: Park opposite Lalak Jan Chowk, Phase 2.
  - vi) DHA – Camp 4: Wateen Chowk, Sector F, Phase 5.
- Rawalpindi -** i) Polo Ground, Race Course, Peshawar Road.
- Islamabad -** i) Gate 3, Fatima Jinnah Park, Sector F-9.
- Quetta -** i) Quetta Cantt.

**PDMA Sindh**

- Karachi -** i) Teen Talwar, Clifton, Karachi

## **Donations to National Disaster Management Fund (NDMF)**

### **Local Currency Account (PAK Rupees)**

Account #: 000294-2

Branch Code: 1732

Branch Name: National Bank of Pakistan, Prime Minister's Secretariat Branch, Islamabad – Pakistan

Swift Code: NBPAPKKA02i

### **Foreign Currencies Account (US Dollars)**

Account #: 9901526

Branch Code: 0341

Branch Name: National Bank of Pakistan, Main Civic Centre Branch, Islamabad – Pakistan

Swift Code: NBPAPKKA02i